



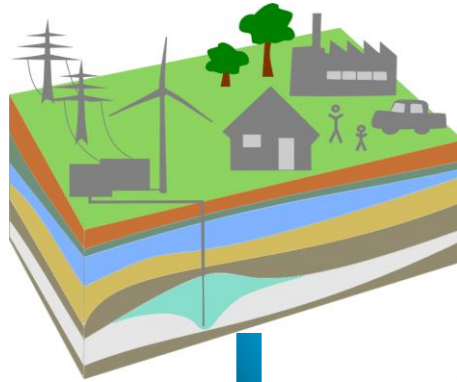
Universität Stuttgart

A pseudo vertical equilibrium model for slow gravity drainage dynamics

2nd SRP-NUPUS Meeting, 2017

Beatrix Becker,
Bo Guo,
Karl Bandilla,
Michael Celia,
Bernd Flemisch,
Rainer Helmig

Motivation: Underground energy storage



Mechanical

Compressed air
energy storage

Chemical

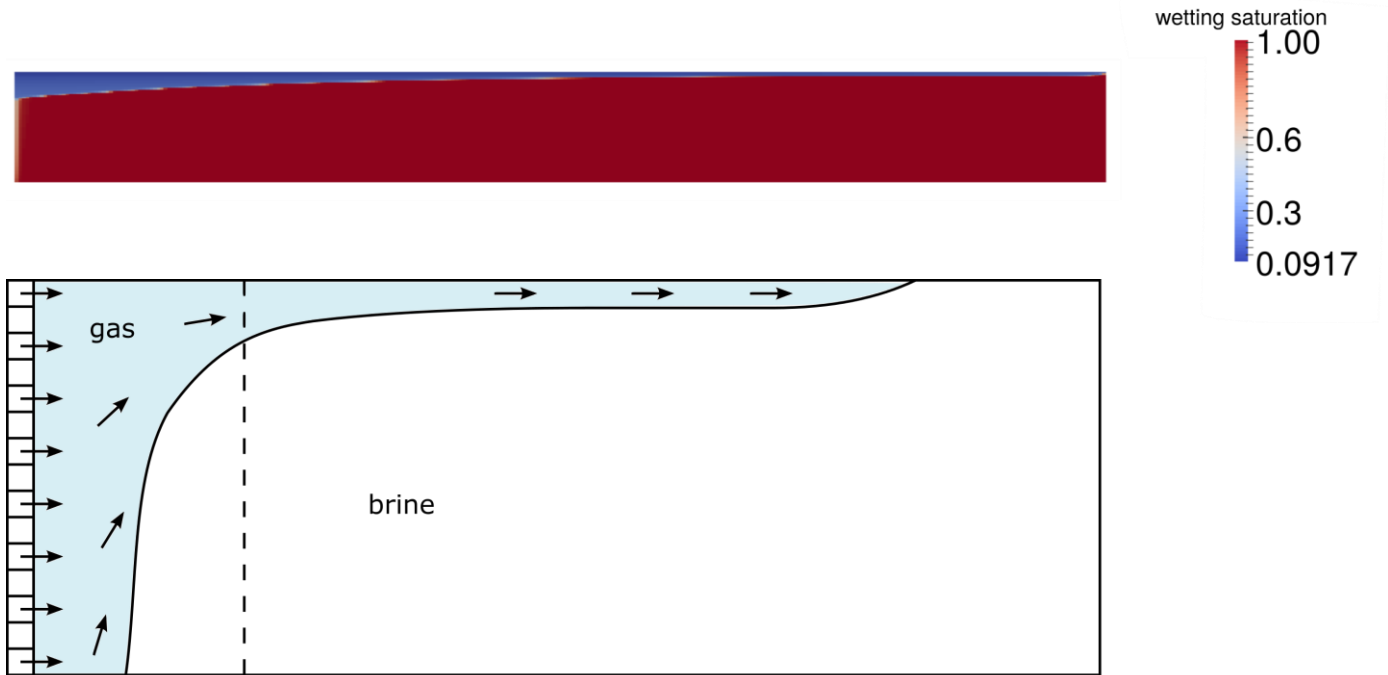
Hydrogen/SNG
storage

Thermal

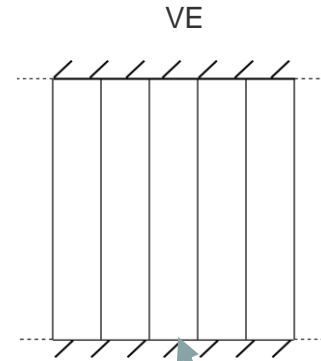
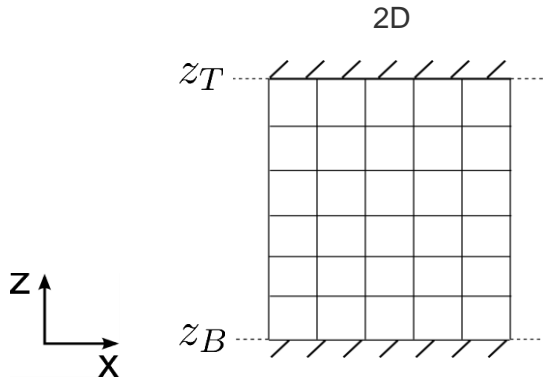
Hot/cold water
storage

Vertical equilibrium model: Assumption

- Gas and brine are in vertical equilibrium
 - ➔ Hydrostatic pressure profiles in the vertical direction



Vertical equilibrium model: Governing equations



$$\frac{\partial}{\partial t}(\varrho_\alpha \phi s_\alpha) + \nabla \cdot (\varrho_\alpha \mathbf{u}_\alpha) = \varrho_\alpha \mathbf{q}_\alpha$$

$$\mathbf{u}_\alpha = -\mathbf{k} \frac{\mathbf{k}_{r,\alpha}}{\mu_\alpha} (\nabla \mathbf{p}_\alpha - \varrho_\alpha \mathbf{g})$$

$$\frac{\partial}{\partial t}(\varrho_\alpha \Phi S_\alpha) + \nabla_{||} \cdot (\varrho_\alpha \mathbf{U}_\alpha) = \varrho_\alpha \mathbf{Q}_\alpha$$

$$\mathbf{U}_\alpha = -\mathbf{K} \frac{\mathbf{K}_{r,\alpha}}{\mu_\alpha} (\nabla_{||} \mathbf{P}_\alpha - \varrho_\alpha \mathbf{G})$$

→

$$\int_{z_B}^{z_T} \dots dz$$

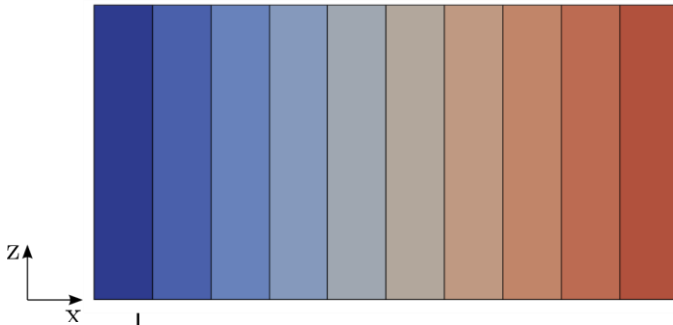
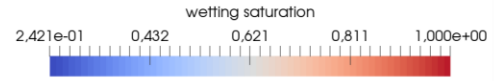
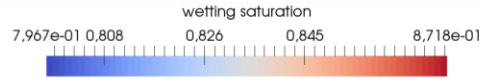
↓

$$P_c(S_\alpha)$$

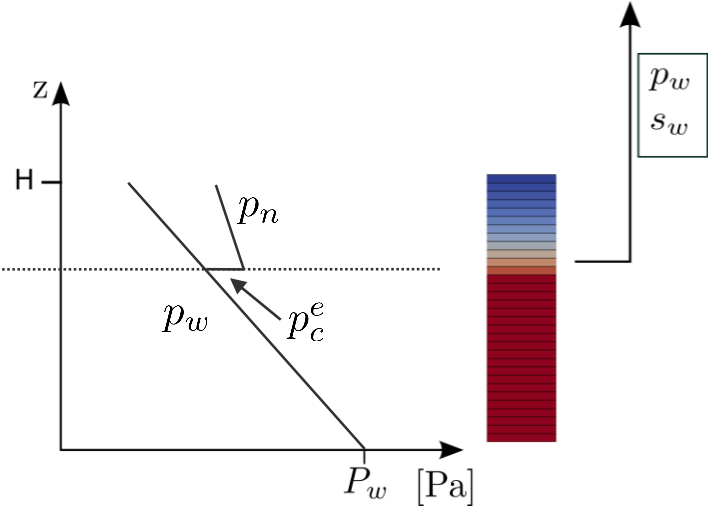
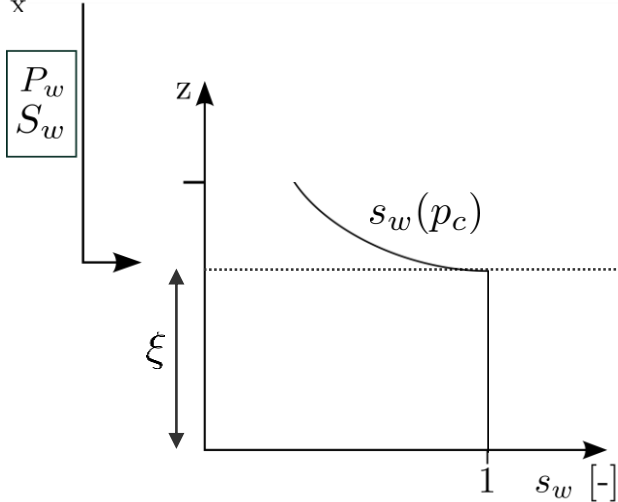
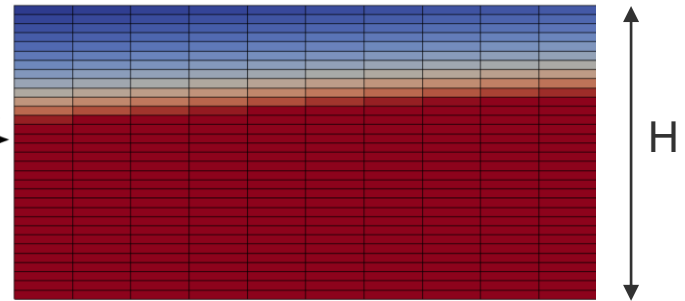
$$\sum S_\alpha = 1$$

$$S_\alpha, P_\alpha$$

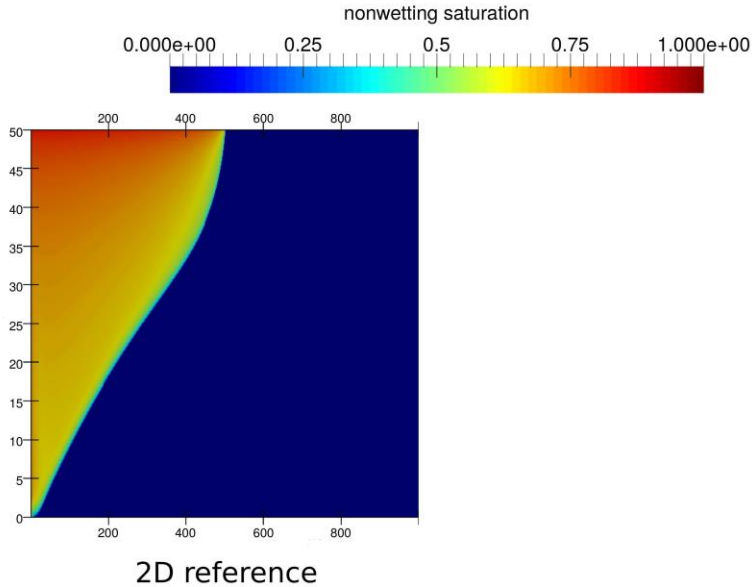
Vertical equilibrium model: Reconstruction of fine scale solution



reconstruction

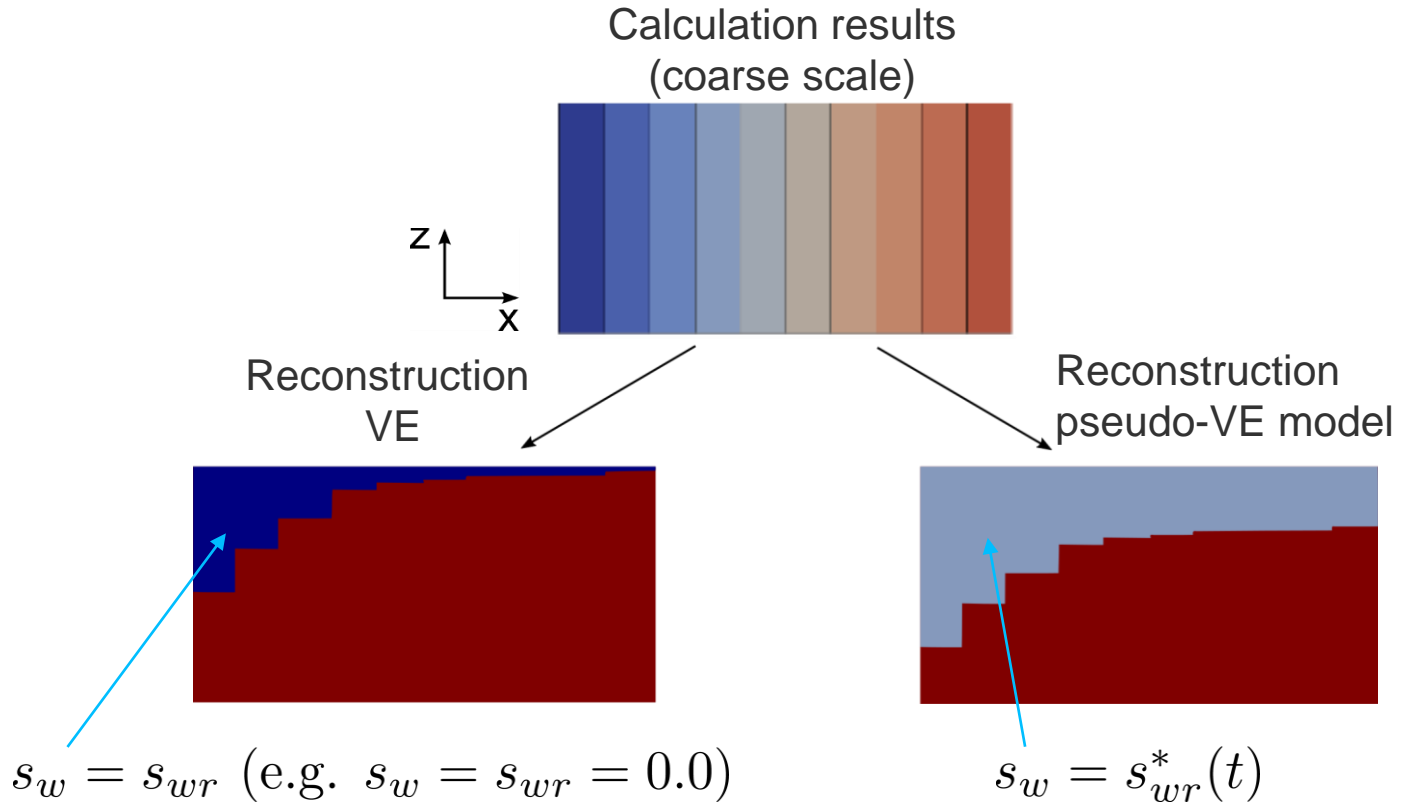


Vertical equilibrium model: The challenge



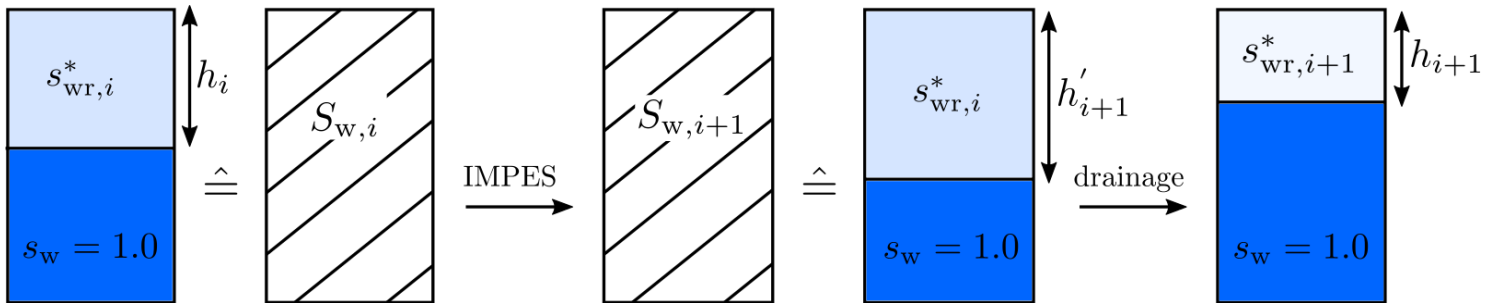
$$t_{\text{seg}} = \frac{H \phi \mu_w}{k_{r,w} k_z (\rho_w - \rho_n) g}, \quad t_{\text{seg}} \ll T_{\text{sim}} \longrightarrow \text{Vertical Equilibrium} \checkmark$$

Pseudo vertical equilibrium model



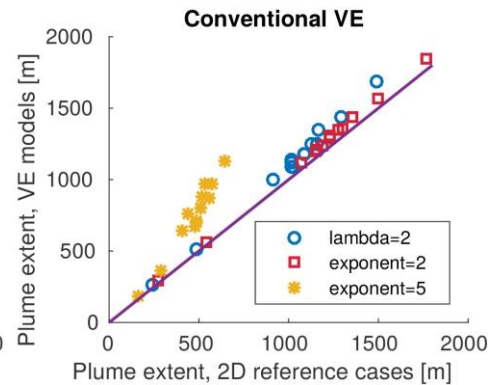
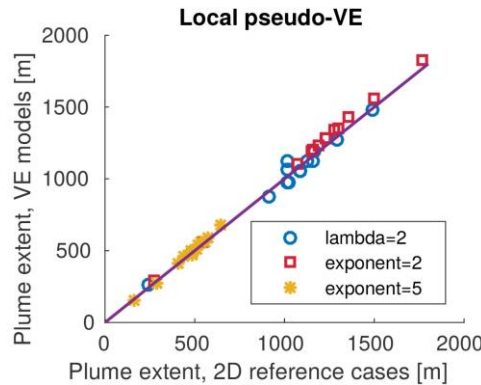
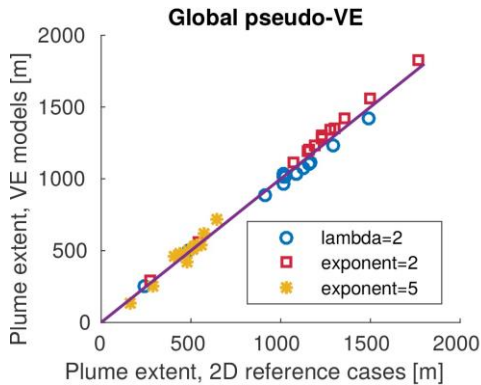
Pseudo vertical equilibrium model: Global and local model

- Global model: calculate average drainage out of plume
- Local model: calculate drainage out of plume in every grid column
- Initial pseudo-residual wetting phase saturation: 0.999



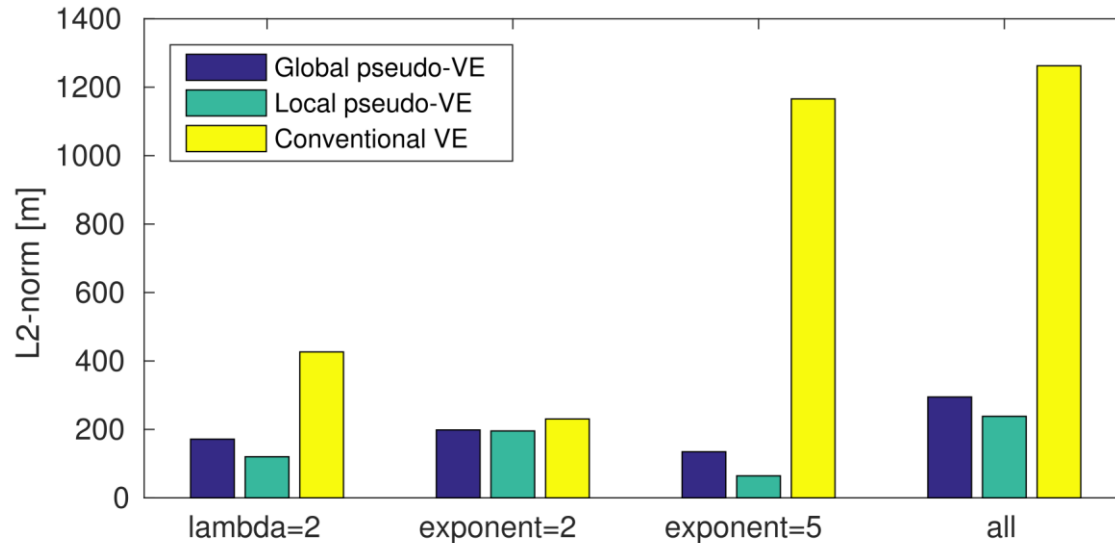
Results: Horizontal plume extent

- 15 test cases (varying permeability, entry pressure, porosity, fluids...)
- 3 relative permeability functions

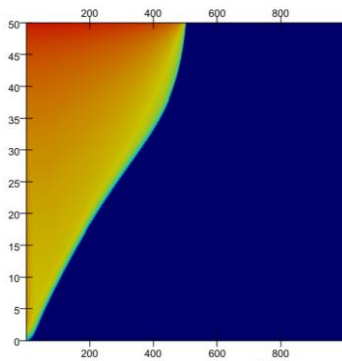


Results: Horizontal plume extent

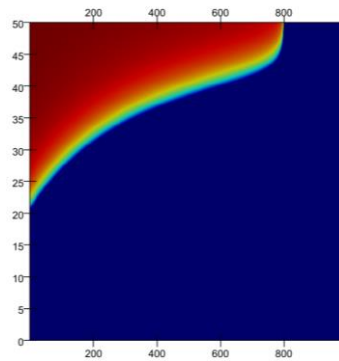
- 15 test cases (varying permeability, entry pressure, porosity, fluids...)
- 3 relative permeability functions



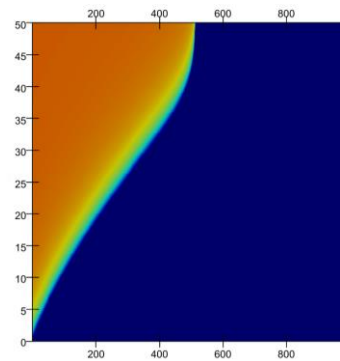
Results: Plume shape



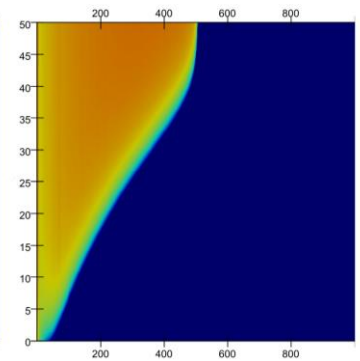
2D reference



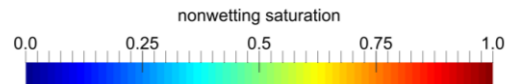
Conventional VE



Global pseudo-VE

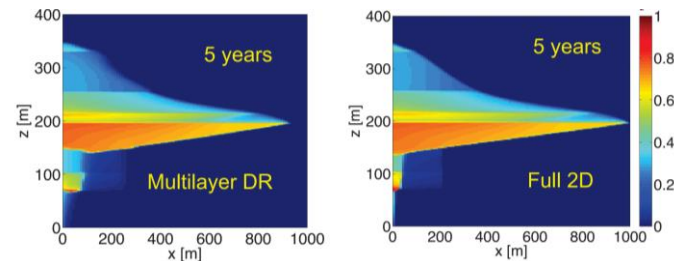
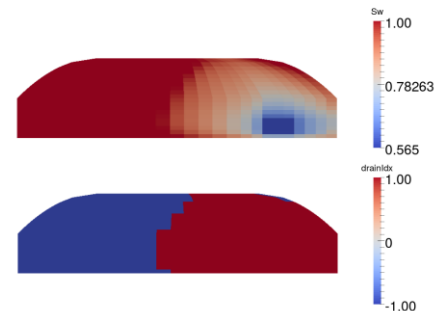


Local pseudo-VE



Outlook

- VE model with slight compressibility
 - Adaptive coupling I
 - Implement for vertical heterogeneity, 3D
 - Further tests, application of energy storage
 - Adaptive coupling II
 - Combine with multi-layer coupling
 - VE model with non-isothermal effects
 - VE model with compositional effects
- ➔ include in adaptive coupled model



(Bo Guo)



University of Stuttgart
Germany

Thank you!

Beatrix Becker

e-mail: Beatrix.becker@iws.uni-stuttgart.de

University of Stuttgart

Institute for Modelling Hydraulic and Environmental Systems

Department of Hydromechanics and Modelling of Hydrosystems

Pfaffenwaldring 61, D-70569 Stuttgart, Germany